



5 Beds



4.0 Baths



3,115 Sq. Ft.



2 Garage

Community: Stonewood

Floorplan: Rosewood

Homesite: #7

Priced at
\$749,900



- Traditional 2-Story w/ Side Entry Garage
- Guest Suite with Full Bath on Main Level
- 2-Story Foyer
- Study and Formal Dining Room off Foyer
- Open Concept Kitchen with Large Island, Corner Walk-In Pantry, Breakfast Area and Lots of Counterspace
- Mud Room
- Great Room with Vaulted Ceiling, Fireplace and Large Windows
- Three Secondary Bedrooms and Laundry Room located Upstairs
- Owner's Suite with Tray Ceilings, Garden Tub, Separate Walk-In Shower, Dual Vanities and Walk-In Closet
- Personalization Options:
 - Sink in Laundry Room
 - Butler's Pantry
 - Beams in Dining Room

(678) 252-2500 • SRHOMES.COM

Raised Bonus/Media Room

Raised Retreat or Owner's Suite

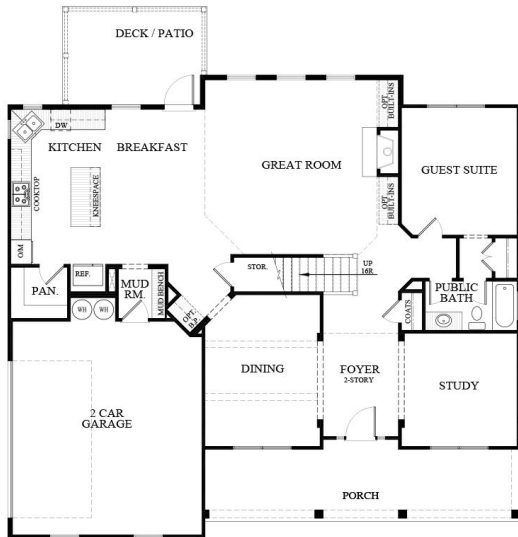
Covered Deck with Extension

Read More Online

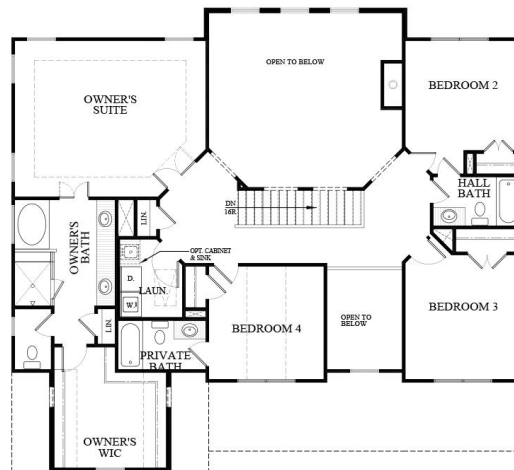
Pricing, features and availability are subject to change without notice. Root Theme makes reasonable efforts to provide accurate information, however, no warranties or representations are made as to its accuracy and Root Theme assumes no liability or responsibility for any errors in pricing or content. All pricing information, including promotions and incentives, must be verified by the buyer and are specific to the appropriate community and home. Photography, floor plans, elevations, renderings, virtual tours, maps, square footage and dimensions are approximate and for illustration purposes only, and will vary from the homes as built and are subject to change without notice. Homes in each neighborhood may be owned and sold by a separate limited liability company (LLC) or other corporate entity.



ROSEWOOD E FLOORPLAN



FIRST FLOOR



SECOND FLOOR

ROSEWOOD - ELEVATION E
STONEWOOD 7/13/21

(678) 252-2500 • SRHOMES.COM

