



4 Beds



3.0 Baths



3,147 Sq. Ft.



2 Garage

**Community:** Yellowstone

**Floorplan:** Burchfield

**Homesite:** #7

**Priced at**

**\$747,900**

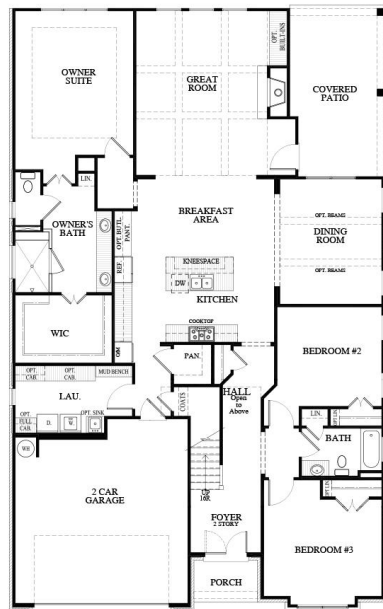
The Yellowstone agent is ready to discuss your future SR Home. 678-252-2525 Ext. 1

- Award Winning Ranch Plan
- 2-Story Foyer
- Large Laundry Room
- Open Concept Kitchen with Large Island, Corner Walk-In Pantry, Breakfast Area and Lots of Counterspace
- Formal Dining Room
- Great Room
- Owner's Suite with Tray Ceiling, Walk-In Shower, Dual Vanities and Walk-In Closet
- Secondary Bedrooms with Full Bath on Main Level
- Fourth Bedroom with Full Bath Upstairs
- Large Loft/Flex Area
- Walk-In Attic with Tons of Storage Space
- Covered Patio

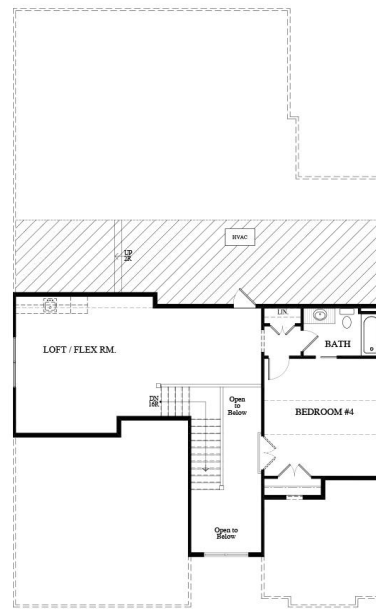
**(678) 252-2500 • SRHOMES.COM**

Pricing, features and availability are subject to change without notice. Root Theme makes reasonable efforts to provide accurate information, however, no warranties or representations are made as to its accuracy and Root Theme assumes no liability or responsibility for any errors in pricing or content. All pricing information, including promotions and incentives, must be verified by an authorized representative for the appropriate community and home. Photography, floor plans, elevations, renderings, virtual tours, maps, square footage and dimensions are approximate and for illustration purposes only, and will vary from the homes as built and are subject to change without notice. Homes in each neighborhood may be owned and sold by a separate limited liability company (LLC) or other corporate entity.

**BURCHFIELD A FLOORPLAN**



**FIRST FLOOR**



**SECOND FLOOR**

BURCHFIELD - ELEVATION A  
MONTEBELLO 3/8/21

**(678) 252-2500 • SRHOMES.COM**

