





4 Beds



3.5 Baths



3,260 Sq. Ft.



2 Garage

Community: Montebello
Floorplan: Rosehill
Homesite: #52

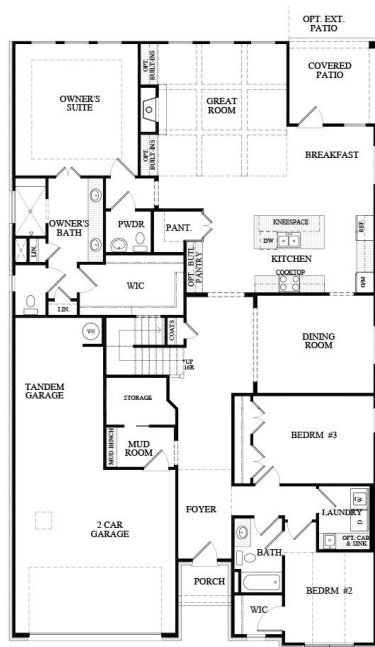
Priced at
\$778,900



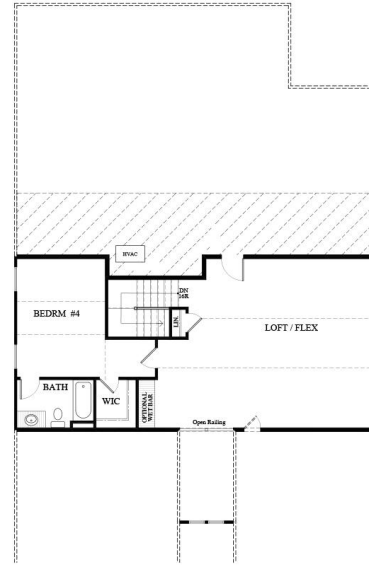
TRUE ranch with a 3 car tandem garage! Gourmet Kitchen w/ custom cabinets, 'Hidden' pantry w/ custom shelving, butler's pantry, & large island. Kitchen overlooks breakfast nook & Great Rm w/ coffered 12' ceilings, built ins & natural stone fireplace. Dining Rm w/ judges paneling. Owner's Suite w/ tray 12' ceiling, walk in closet, double vanity & spacious shower. Hardwoods throughout main (except guest beds). Rear Covered Deck. ... [Read More Online](#)

(678) 252-2500 • SRHOMES.COM

ROSEHILL C FLOORPLAN



FIRST FLOOR



SECOND FLOOR

ROSEHILL - ELEVATION C
MONTEBELLO 3/24/21

(678) 252-2500 • SRHOMES.COM

