

Community: Montebello
Floorplan: Rosehill
Homesite: #234

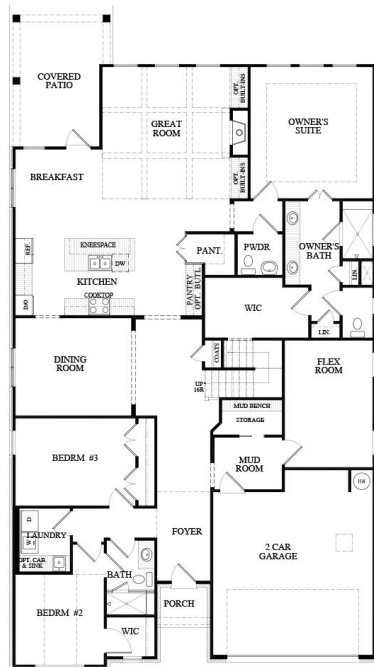
Priced at
\$783,900



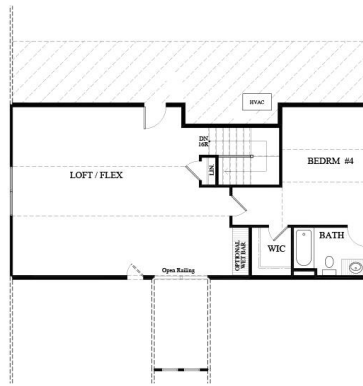
- Ranch Plan with Tandem Garage
- Great Room with Coffered Ceiling
- Formal Dining Room
- Large Laundry Room
- Owner's Suite with Tray Ceiling, Dual Vanities, Massive Zero-Entry Shower and Walk-In Closet
- Open Concept Kitchen with Large Island, Corner Walk-In Pantry, Breakfast Area and Lots of Counterspace
- Secondary Bedrooms and Bath on Main Level
- Additional Bedroom and Bath Upstairs
- Large Loft/Flex Space
- Covered Patio

(678) 252-2500 • SRHOMES.COM

ROSEHILL A FLOORPLAN - HOMESITE #234



FIRST FLOOR



SECOND FLOOR

ROSEHILL - ELEVATION A
MONTEBELLO 3/12/21

(678) 252-2500 • SRHOMES.COM

