



3 Beds



2.0 Baths



2,405 Sq. Ft.



2 Garage

Community: Montebello
Floorplan: Burchfield
Homesite: #106

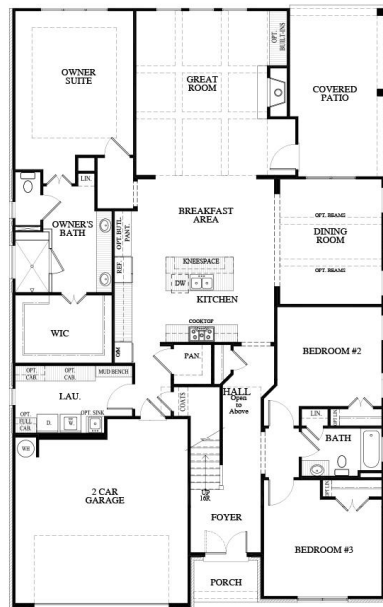
Priced at
\$778,900



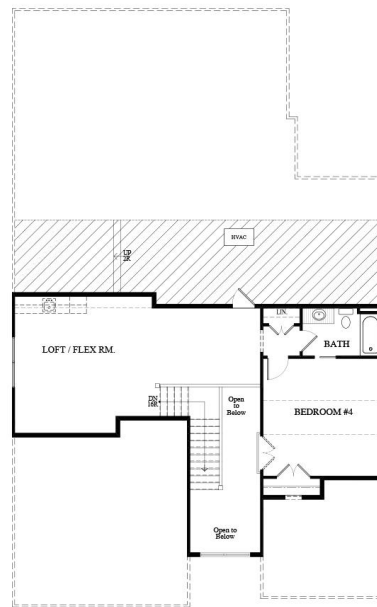
- Award Winning Ranch Plan
- 2-Story Foyer
- Large Laundry Room
- Open Concept Kitchen with Large Island, Corner Walk-In Pantry, Breakfast Area and Lots of Counterspace
- Formal Dining Room
- Great Room with 12' Coffered Ceiling, Fireplace and Optional Built-Ins
- Owner's Suite with Tray Ceiling, Walk-In Shower, Dual Vanities and Walk-In Closet
- Secondary Bedrooms with Full Bath on Main Level
- Covered Patio

(678) 252-2500 • SRHOMES.COM

BURCHFIELD C FLOORPLAN



FIRST FLOOR



SECOND FLOOR

BURCHFIELD - ELEVATION C
MONTEBELLO 3/8/21

(678) 252-2500 • SRHOMES.COM