



Elevation A



3 Beds



2.0 Baths



2,045 Sq. Ft.



2 Garage



1 Story

- Foyer with Coat Closet
- Mud room with Laundry Room Access
- Open Concept Kitchen with Large Island, Walk-In Pantry, and Lots of Counterspace
- Formal Dining Room with Views of the Covered Patio
- Great Room with Fireplace
- Owner's Suite with Tray Ceiling, Walk-In Shower, Linen Closet, Dual Vanities, and Walk-In Closet
- Two Spacious Secondary Bedrooms with Full Bath and Linen Closet
- Personalization Options:
 - Sink in Laundry Room
 - Exposed Beams in Great Room
 - Built-Ins in Great Room
 - Second Floor with Fourth Bedroom, Third Full Bath and Loft/Flex Space

(678) 252-2500 • SRHOMES.COM

ADDITIONAL ELEVATIONS

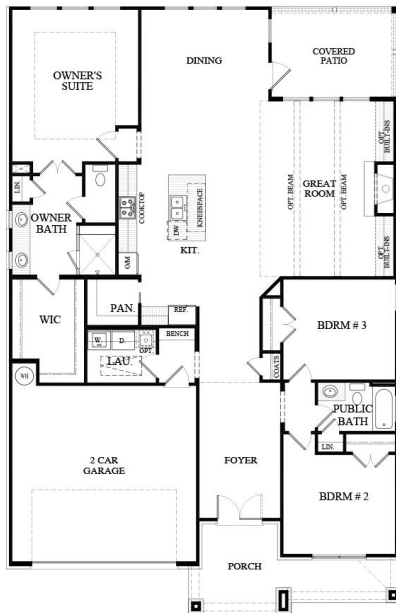


(678) 252-2500 • SRHOMES.COM

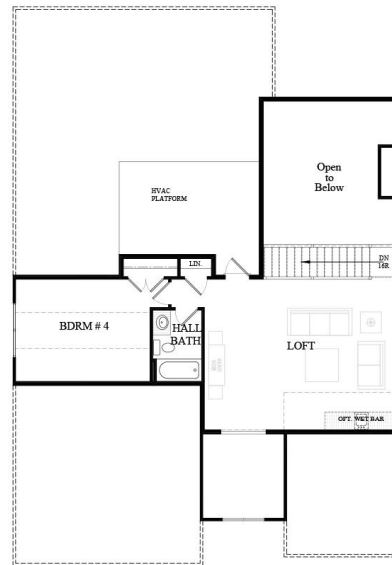
Pricing, features and availability are subject to change without notice. Root Theme makes reasonable efforts to provide accurate information, however, no warranties or representations are made as to its accuracy and Root Theme assumes no liability or responsibility for any errors in pricing or content. All pricing information, including promotions and incentives, must be verified by an authorized representative for the appropriate community and home. Photography, floor plans, elevations, renderings, virtual tours, maps, square footage and dimensions are approximate and for illustration purposes only, and will vary from the homes as built and are subject to change without notice. Homes in each neighborhood may be owned and sold by a separate limited liability company (LLC) or other corporate entity.



HOLLY A FLOORPLAN



FIRST FLOOR



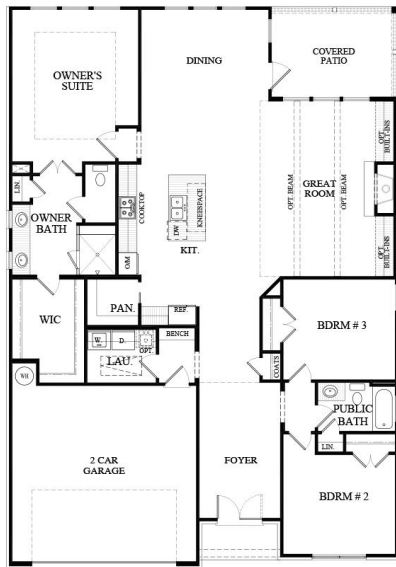
OPTIONAL SECOND FLOOR

HOLLY - ELEVATION A
CHIMNEY CREEK 7/13/21

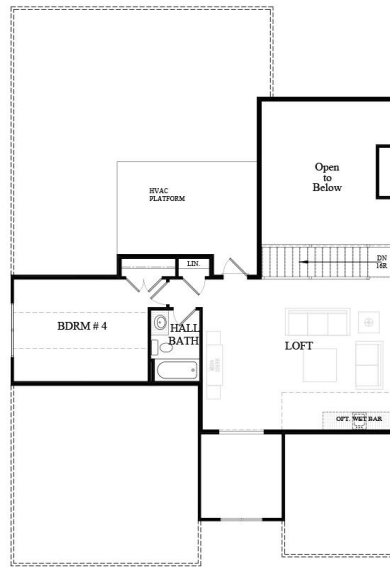
(678) 252-2500 • SRHOMES.COM



HOLLY B FLOORPLAN



FIRST FLOOR



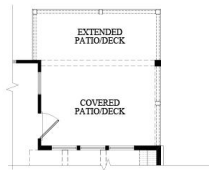
OPTIONAL SECOND FLOOR

HOLLY - ELEVATION B
CHIMNEY CREEK 7/13/21

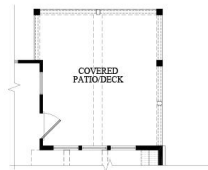
(678) 252-2500 • SRHOMES.COM



HOLLY OPTIONS



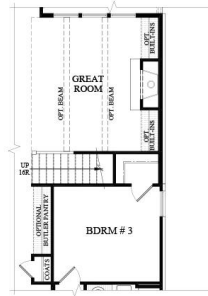
**OPTIONAL COVERED
EXTENDED DECK/PATIO**



**OPTIONAL
EXTENDED DECK/PATIO**



**OPTIONAL
BASEMENT STAIR - NO LOFT**



**OPTIONAL
LOFT STAIR**

HOLLY - OPTIONS
CHIMNEY CREEK 7/13/21

(678) 252-2500 • SRHOMES.COM